

Forever ABBA Gold

Part III B \flat

arr. André Waignein

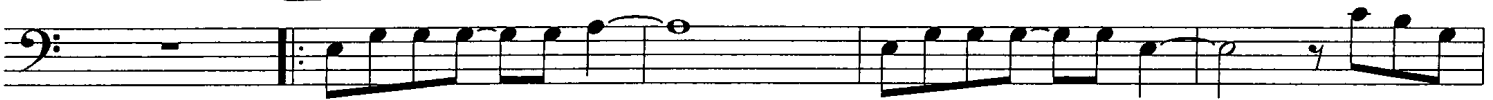
"Dancing Queen" $\text{♩} = 100$



f



17



f



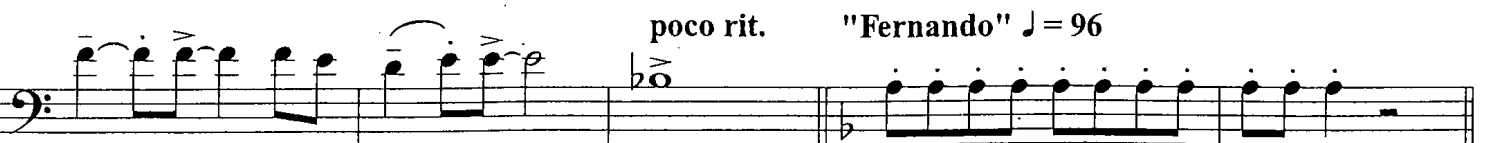
2.

f

26



f



poco rit.

"Fernando" $\text{♩} = 96$

f \rightrightarrows *p*

Forever ABBA Gold

46

p

59

f

66

mp

ff *mp*

poco accel.

83 "The winner takes it all" $\text{♩} = 120$

ff

Forever ABBA Gold

Musical staff with bass clef, containing several measures of music with eighth and sixteenth notes, some with accents.

92

Musical staff with bass clef, starting with a forte (*f*) dynamic marking. It includes a repeat sign and several measures of music.

1.

2.

Musical staff with bass clef, showing first and second endings. The first ending leads back to an earlier section, and the second ending concludes the phrase.

101

Musical staff with bass clef, starting with a mezzo-forte (*mf*) dynamic marking. It contains several measures of music with eighth notes.

1.

2.

Musical staff with bass clef, showing first and second endings. The first ending leads to a repeat, and the second ending concludes the phrase.

112 "Money, Money, Money" ♩ = 120

Musical staff with bass clef, starting with a forte (*f*) dynamic marking. It features a rhythmic pattern of eighth notes.

118

(sost.)

Musical staff with bass clef, showing dynamics from fortissimo (*fp*) to forte (*f*) to mezzo-forte (*mf*). It includes a fermata and a *sost.* marking.

(sost.)

Musical staff with bass clef, showing dynamics from forte (*f*) to mezzo-forte (*mf*). It includes a fermata and a *sost.* marking.

126

Musical staff with bass clef, showing dynamics from forte (*f*) to mezzo-forte (*mf*). It contains several measures of music.

poco rit.

Musical staff with bass clef, showing dynamics from mezzo-piano (*mp*) to mezzo-forte (*mf*). It includes a fermata and a *poco rit.* marking.

Forever ABBA Gold

135 a tempo

f *mf*

f *mf*

143

mf

ff

151

f *f*

f

mf *ff* *f*

fp *ff*